

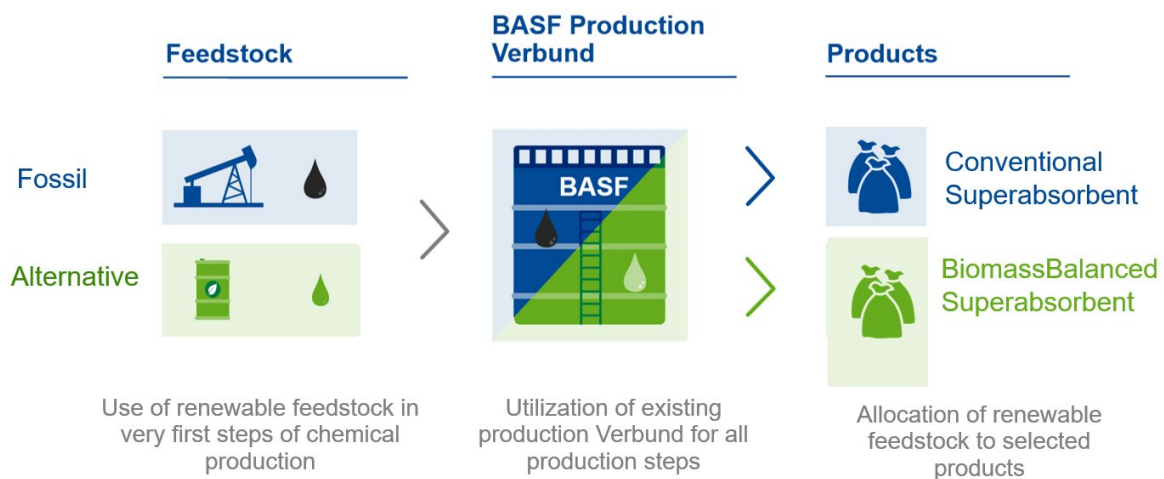
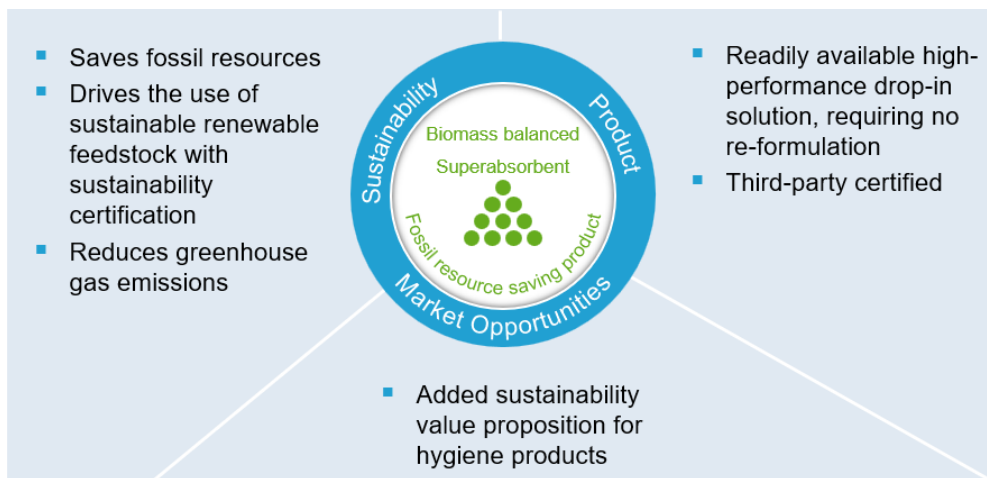
# Biomass Balanced Superabsorbents

## Reducing CO<sub>2</sub> emissions and saving fossil resources

- Main Application:** Baby Care, Incontinence Products, Feminine Care
- Main Feature:** BASF's biomass balance approach drives the replacement of fossil with renewable resources in the value chain of these or other BASF products
- Grades:** Product grades available on request



### Biomass Balanced superabsorbent provides outstanding benefits:



Although all statements and information in this advertisement are believed to be accurate and reliable, they are presented gratis and for guidance only, and risks and liability for results obtained by use of the products or application of the suggestions described are assumed by the user. The claims and supporting data provided in this publication have not been evaluated for compliance with any jurisdiction's regulatory requirements and the results reported may not be generally true under other conditions or in other matrices. Users must evaluate what claims and information are appropriate and comply with a jurisdiction's regulatory requirements. **SELLER MAKES NO WARRANTY OF ANY KIND, EITHER EXPRESS OR IMPLIED, BY FACT OR LAW, INCLUDING WARRANTIES OR MERCHANTABILITY OR FITNESS FOR A PARTICULAR PURPOSE.**